



3 Bed
House - Mid Terrace
located in

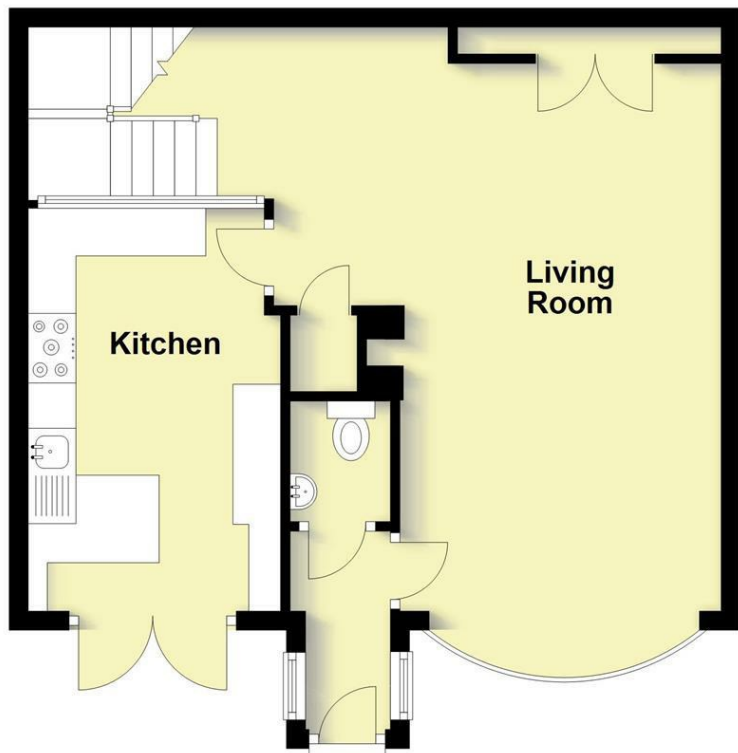
£1,500 PCM




MARGETTS
ESTABLISHED 1806

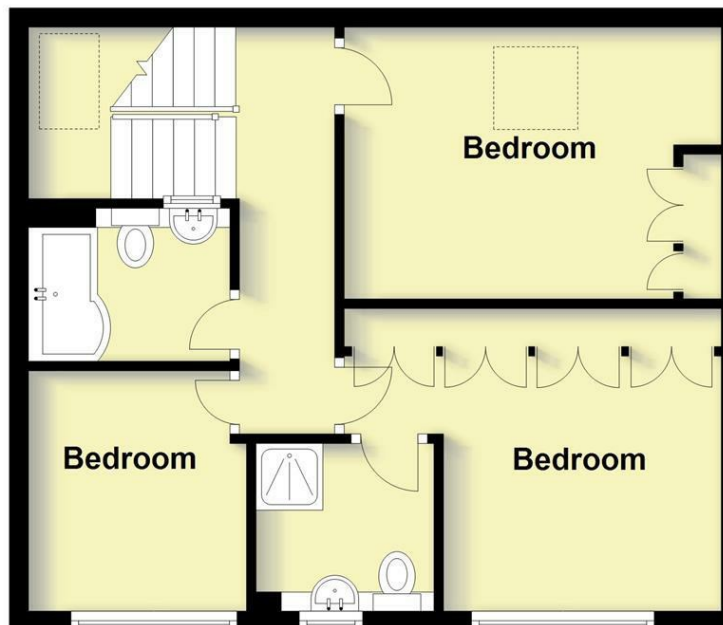
Ground Floor

Approx. 45.8 sq. metres (493.2 sq. feet)



First Floor

Approx. 44.5 sq. metres (479.2 sq. feet)



Total area: approx. 90.3 sq. metres (972.4 sq. feet)

This plan is for illustration purposes only and should not be relied upon as a statement of fact

DIRECTIONS

CONTACT

12 High Street
Warwick
Warwickshire
CV34 4AP

E: lettings@margetts.co.uk
T: 01926 496262
www.margetts.co.uk

